

Circle E Auction LLC
1551 14000 Rd.
Altamont, KS 67330

Circle E Auction LLC



Auctioneer's Note: We will have a very nice line of items to sell. Almost every item is right off the farm. Something for everyone. Most of the items will sell with **No Reserve**. At our last auction, we sold over 93% of items consigned. Since sale bills are printed 3 weeks in advance, we usually have a lot more items than listed. We will be selling in 2 rings at the same time, so bring a friend. Because we rely on the word of others, all items are subject to prior sale and/or no show. If driving a distance for a single item, please call.

NOTE: 9.25% Sales Tax will be added to all items that are not used for agriculture. All dealers must bring a copy of your resale tax license.

If you have items to sell, you can still consign to this auction! We are open 8:00-5:00 Monday-Friday and on Saturday by appointment only to check-in and unload your items. We are always closed on Sunday! **No consignments taken after 5:00 pm Wednesday, March 18, 2026! View pictures at circleeauction.com.**

Everything must be removed in 14 days. After 14 days there will be a storage fee of \$25 per item per day. Any items left after 30 will be considered abandoned and will become the property of Circle E Auction.



17th Annual Spring **CONSIGNMENT AUCTION** Saturday, March 21, 2026 at 9:00 am



LIVESTOCK EQUIPMENT

- Landhonor 10' cattle squeeze chute
- Priefert portable squeeze chute, auto headgate
- Powder River squeeze chute w/ palp. cage
- 2- Southwest Livestock Equip. squeeze chute w/ palp. Cage

UTV'S & LAWN MOWERS

- 2019 JD XUV 865M Gator, CHA, 197 hrs, 1216 miles, 4x4
- 2023 Bad Boy 750 UTV, 180 hrs, 1062 miles, 4x4
- 2024 Polaris 200 RZR, 200 miles,
- 2015 JD 825i Gator, 10k miles, 4x4
- 2015 JD 825i Gator, 4x4, needs engine
- 2- Yamaha Big Bear ATV's, 4x4, 214 & 457 hrs
- 2- Future remote controlled lawn mower, new
- 2016 Ex Mark Lazer Z lawn mower, 1049 hrs, 60" cut, 27 HP
- JD 325 lawn mower, 590 hrs, 48" cut

SHOP ITEMS

- 2 AGT 2-post auto lifts, up to 10,000 lb
- 3- Landhero 5KW diesel fired heaters
- 4- ATS & Landhonor 40 gal. 2-stage air compressors, new
- 3- Landhonor 15,000 hyd. winches
- 11- 12V & 120V electric winches,
- 2- Landhonor gas 3" trash pumps
- 3- Landhonor HD gas plate compactors
- 3- Landhonor gas leaf blowers

- 2- AGT Tire changers
- 2- AGT tire balancers
- 24" semi-automatic tire changer & wheel balancer
- 2- Future self-leveling lasers, new
- 3- 65' extension cord reels, new
- 3- 65' 3/8" hose reels, new
- 3- 10.5' telescoping ladders, new
- 6- tool stools & 3- tool carts
- 3- wagon carts, new
- 26- 5/16" & 3/8" ratchet chain boomers, new
- 52- 5/16" & 3/8" G70 transport chains, new
- Large quantities of ratchet tie downs
- Several 2-ton chain hoists, 2- gentry cranes

MISC. ITEMS

- 5- 40' long x 8' wide metal storage containers, with side doors, double end doors, one trip
- 1- 10' metal storage container
- 5- 6'x8' & 5- 8'x10' metal sheds, new
- 8- metal carports & 2- 40' portable metal sheds, new
- 2- AGT Portable sawmills, 15 HP gas engines, 32" max logs
- 2- 5'X8'x3/4" thick steel plates, new
- 300 pieces of metal roofing, new
- 48- Future roadbed protection pads, new
- 4- iron racks, Massage chair, new

CONSTRUCTION EQUIPMENT

- 2024 JD 325G skid steer, 598 hrs, CHA, high flow
- 2023 Case SV280B skid steer, 1175 hrs, OROPS
- 2020 Cat 259D3 skid steer, 2509 hrs, CHA, camera
- 2021 JCB T270 skid steer, 354 hrs, CHA, high flow
- 2006 JD 320 skid steer, 1120 hrs, OROPS
- Ford 555D backhoe, 5640 hrs, CHA, 4x4, ext. hoe
- Ashland I-950 scraper, hyd. eject, 9.5 yd.
- Soilmover 425RF dirt scraper, hyd. eject, 4.25 yd.
- 2019 Sullair 185D air compressor, Kub diesel, 439 hrs
- TCM FG20 forklift, 9200 hrs
- 1- AGT Wheel loader, 15 hp. gas, new
- 2- AGT Crawler loaders, 15 hp. gas, new
- 2- AGT mini track loaders, 15 hp. gas, new
- 2- AGT mini skid loaders, 23 hp. gas, new
- 2- Landhonor ME380 mini skid loader, new
- 4- ATS-T460 mini skid steers, 23 hp., new
- Future 2- FT36C, 1- FT360T, 1- FT323W mini skid steer, new
- 14- AGT mini excavators, 2-H12R, 2-MH12RX, 4-H15R, 2-MX15R, 2-QK16R, 1-QK18Y,
- 1- QK20R, new
- 1- ATS ME18 mini excavator, new
- Set of 10-16.5 SS tires & wheels

SKID STEER ATTACHMENTS

ALL SKID STEER ATTACHMENTS SELL @ 9:00 SHARP

- Bainter Boom trencher, SS mount, up to 16" wide, never used
- Landhonor 72" no-till seed drill for tractor or skid steer
- 8- 72" grapple buckets
- Landhonor 84", 78", 72", 66" buckets
- Landhonor 78", 72" & 66" rock buckets
- 3- Future 72" 4-1 buckets
- 11- Wolverine & Mower King 72" tillers
- 10- Wolverine & Landhonor post hole diggers, 12" & 18" bit
- 2- Future 59" vibratory rollers
- 3- Wolverine 8"x48" trencher
- 7- Mower King 77" mowers
- 5- Wolverine 72" mowers
- 3- Landhonor 6' Harley rakes
- 8- Wolverine & Landhonor pallet forks, 4', hyd. adjust
- 18- Wolverine, Mower King & Future pallet forks
- 6- Landhonor pallet forks
- 2- Future 61" broom sweeper
- Mower King 95" dozer blade
- Landhonor 8' grader blade
- 1- Wolverine 78" land leveler
- 1- Wolverine 72" ripper
- 1- Wolverine 8' snow pusher
- 2- Wolverine 84" angle blade
- 2- Landhonor backhoes
- 5- Landhonor bale spikes
- 3- AGT skid steer breakers
- Cat 6-way dozer blade
- Danuser EP1530 post hole digger, 6" & 22" bits
- Jenkins stump bucket
- Several 2-prong bale spikes
- Several blank plates & receiver hitch plates
- Several attachments for Cat 303, 305 & 307 excavators- buckets, ripper, rake, etc.
- Several misc. attachments- tree spades, tree booms, tree pullers, quick hitches
- Several Mini skid steer attachments- 5- pallet forks, 2- 44" grapple buckets, 2- 44" rock grapples, 3- 4-1 buckets
- 2- sets of 8 pcs. excavator attachments
- 4- Future JIB booms for forks
- Large lot of attachments, too numerous to mention



17th Annual Spring

CONSIGNMENT AUCTION

Saturday, March 21, 2026 at 9:00 am

SALE LOCATION: 1551 14000 Road Altamont, KS 67330

DIRECTIONS: 1.5 miles east of Altamont, KS or 9 miles west of Oswego, KS on Hwy. 160.

NOTE: WE ARE ALWAYS CLOSED ON SUNDAY!

Online bidding starts at 9:00am on select items @circleeauction.com

TRACTORS

- 2002 JD 9220, 7023 hrs, CHA, 4WD, 24 sp, F&R duals
- 2012 JD 8310R, 2510 hrs, CHA, PS, ILS, F&R duals
- 2006 JD 8530, 5676 hrs, CHA, MFWD, IVT, ILS, F&R duals
- 2009 JD 8130, 4579 hrs, CHA, MFWD, PS, duals
- 1996 JD 8100, 4687 hrs, CHA, MFWD, AT ready, PS, duals
- 2009 JD 7930, 3797 hrs, CHA, MFWD, 20 sp, duals
- 2007 JD 7830, 4370 hrs, CHA, 20 sp, duals, JD 746 loader
- 1993 JD 7800, 8648 hrs, CHA, MFWD, 19 sp, PS
- 2001 JD 7410, 5364 hrs, CHA, 16 sp, JD 740 loader
- 2011 JD 7330, 5326 hrs, CHA, 16 sp, H360 loader
- 2010 JD 7230 Premium, 9090 hrs, CHA, MFWD, 16 sp, JD 741 loader
- 1997 JD 7210, 6406 hrs, CHA, MFWD, 16 sp, JD 740 loader
- 1980 JD 4840, shows 869 hrs, CHA, 2-wd, 8 sp, PS, duals
- 1989 JD 4455, 6072 hrs, CHA, 2-wd, 16 sp, QR, duals
- 2024 JD 6155M, 155 hrs, CHA, MFWD, 20 sp, 640R loader
- 2022 JD 6155R, 2138 hrs, CHA, MFWD, IVT
- 2017 JD 6155R, 2784 hrs, CHA, MFWD, 20 sp, JD 640R loader
- 2016 JD 6155R, 5911 hrs, CHA, MFWD, IVT, TLS, JD 640R loader
- 2022 JD 6140M, 995 hrs, CHA, MFWD, 24 sp, 620R loader
- 2023 JD 6120M, 664 hrs, CHA, MFWD, 16 sp, JD 620R loader
- 2011 JD 6115D, 2970 hrs, CHA, MFWD, 9 sp, JD 563 loader
- 2022 JD 5100E, 874 hrs, CHA, MFWD, 24 sp, JD 520M loader
- 2013 JD 5085M, 1469 hrs, CHA, MFWD, 16 sp, JD H260 loader
- 2023 JD 5067E, 454 hrs, CHA, MFWD, 12 sp, JD 520M loader
- 2015 JD 5065E, 267 hrs, OROPS, MFWD, 9/3 sp, JD H240 loader
- JD 1530, canopy, 2-wd, 8 sp, JD 145 loader
- 1951 JD B, narrow front, 2 point, PTO
- 2024 Case IH 140A, 11 hrs, CHA, MFWD, 8 sp, CIH L105 loader
- 2012 Case IH 125A, 1282 hrs, CHA, MFWD, 12 sp, CIH L755 loader
- 2003 Case MX255, 8000 hrs, CHA, MFWD, 18 sp, PS, duals
- Case IH 5230, 5575 hrs, CHA, 2-wd, 16 sp.
- 1982 International 5088, 7826 hrs, CHA, 2-wd, 18 sp.
- 1981 International 5088, 8000 hours, CHA, 2-wd, 18 sp, duals
- International 886, 2133 original hours, CHA, 2-wd, T/A
- 1959 Case 311, wide front, 3 pt, PTO, restored
- 1998 NH TS90, 8650 hrs, CHA, 2-wd, 12 sp, Westendorf loader
- 2010 Versatile 280, 2316 hrs, CHA, MFWD, 18 sp, PS, F&R duals

HARVEST EQUIPMENT

- JD 922 flex header, new sickle, dual drive
- 1997 Case IH 1020 flex header, 25' cut, SCH Pro-Drive
- 2015 EZ-Trail 510 grain cart, tarp
- EZ-Trail 3400 gravity wagon, hyd. side auger, tarp
- Westfield WR100-31 grain auger, 5 HP electric motor w/ 100' cord

TILLAGE EQUIPMENT

- 2023 McFarlane Incite 5140 vertical till, 40' wide, rolling baskets, 4 bar spike harrow
- 2018 McFarlane Incite 5140 vertical till, 40' wide, double rolling baskets
- 2015 Great Plains 1800 turbo max, 18' vertical till, nice
- Sunflower 1433-35 disk, 35' wide, 9" spacing
- Case IH 3900 disk, 25' wide, 7.5" spacing
- JD 630 disk, 22' wide, 7.5" spacing, like new
- 2002 JD 2200 field cultivator, 36' wide, floating hitch, single point, 3 bar harrow
- JD 980 field cultivator, 12' wide
- Krause 2500 chisel plow, 12 shanks, 11.5', 3pt. hitch
- Unverferth 1225 rolling harrow, 28' wide
- Schulte 2500 rock picker, hyd. drive, 3 bat reel, 5' pickup
- Aerway AW120 pull-type aerator, 10' wide
- 2- JD 950 cultimulcher, 12' & 15'
- Brillion 10' 6" cultimulcher
- Kewanee 15' cultimulcher

See reverse for Construction Equipment & Skid Steers

FARM EQUIPMENT

- Blu-Jet AT5000 anhydrous applicator, 50' wide, 22" spacing
- 2014 BBI 26' poultry litter spreader, tandem axle, Outback rate controller
- 2024 H&S S3231 manure spreader, 540 PTO, new
- 2018 Kuhn Knight PS242 manure spreader, 540 PTO, 2-beaters, gate
- 2019 Kuhn Knight PS235 manure spreader, 540 PTO, 2-beaters, gate
- NH 520 manure spreader, 540 PTO, gate
- NH 328 manure spreader, 540 PTO
- NI 364 manure spreader, 540 PTO, 1 beater, gate
- JD 34 manure spreader, 540 PTO
- New Idea manure spreader, 540 PTO
- Tyler fertilizer spreader, tandem axle
- Simonsen fertilizer spreader, 540 PTO
- Balzer 2250 liquid manure tank, tandem axle
- Redball 570 sprayer, 90' booms, 1200-gal, Raven 450 monitor
- Hardi 1000 sprayer, 90' booms, hyd. driven
- Hardi 1100 sprayer, 60' booms, hyd. driven

PLANTING EQUIPMENT

- 2016 Case IH 500T air seeder, 40 wide, 7.5", scales, bulk fill
- 2024 Great Plains 1006NT no-till drill, 10' wide, 7.5", small seed, native grass seed, like new
- JD 1560 no-till drill, 15' wide, 7.5", small seed, completely rebuilt, like new!
- 2009 JD 1590 drill, 10' wide, 7.5", small seed
- JD 750 no-till drill, 10' wide, 7.5", small seed, completely rebuilt, like new!

- JD 455 drill, 25' wide, 7.5", Yetter markers
- 2013 Great Plains 3S4000 HD grain drill, 40' wide, 7.5"
- Great Plains SS 3010 no-till drill, 30' wide, 7.5"
- Crustbuster 3400 grain drill, 30' wide, 8", All-Plant, markers
- Brillion SS96-01 seeder, 8' wide
- Speed King 240 seed tender, BH, triple axle

HAY EQUIPMENT

- 2023 JD 460M baler, 10,264 bales, net, 540 PTO
- 2020 JD 460M Silage Special baler, net, 6240 bales, 540 PTO
- 2020 JD 560M baler, 6235 bales, net, 1000 PTO
- 2015 JD 569 baler, 10,606 bales, net, 540 PTO
- 2019 JD 450M baler, 1791 bales, net, 540 PTO
- 2014 JD 459 baler, 1930 bales, net, 540 PTO
- 2018 Vermeer 605N round baler, 30k bales, net, 1000 PTO
- 2018 McHale V640 round baler, 14k bales, net, 540 PTO
- JD 347 square baler, wire tie, hyd. swing
- 2014 H&S BW1000 line wrapper
- 2015 Anderson NWX-660 bale wrapper
- 2022 Kuhn GMD 310 disc mower, 10' 6" cut
- New Idea 5409 disc mower, 9' cut, on Stoney Point caddy
- Sitrex MX10, 10-wheel hi-capacity rake
- Sitrex MX10 Explorer 10-wheel hi-capacity rake
- M&W DF10, 10-wheel hi-capacity rake
- NH ProCart 819 V-rake, 8 wheel
- Sitrex RT5800 4-basket tedder
- NH 3417 4-basket tedder
- Kuhn GF5202THA 4-basket tedder
- 2016 Krone KW5.52/4x7T 4-basket tedder
- 2023 2EZ bale trailer, 24', unused, hyd. lift
- GN 36' bale trailer, tandem axle
- AgWay AC1500 sq. bale grapple with JD 600/700 mounts, 12 bales
- Norden 510F sq. bale grapple, skid steer mount, 10 bales
- Landhonor sq. bale grapple, skid steer mount, 8-10 bales

FEEDING EQUIPMENT

- 2014 Schuler 6020 vertical mixer, scales, 1000 PTO
- 2002 Artsway PM25 grinder mixer
- International 1250 grinder mixer

Online Bidding on select items @ circleeauction.com

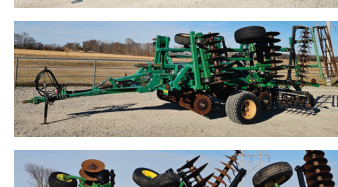
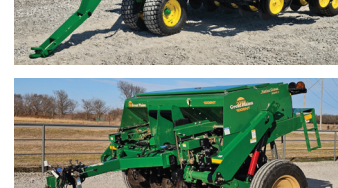
CUTTERS

- 2015 JD HX20 batwing cutter, 20' cut, 1000 PTO
- 2011 JD HX15 batwing cutter, 15' cut, 540 PTO
- 2008 JD HX15 batwing cutter, 15' cut, 540 PTO
- 2020 JD MX10 pull-type cutter, 10' cut, 540 PTO
- 2013 JD MX10 pull-type cutter, 10' cut, 540 PTO
- Bush Hog 3008 pull-type cutter, 8' cut, 540 PTO
- Bush Hog SQ84 3pt. cutter, 7' cut
- 2021 Land Pride AFM4216 finish mower, 16' cut, pull-type

MISC. FARM ITEMS

- Garfield 1600RS pull-type 6-way angle blade, 16' wide
- Shaver HD-8 3pt. post driver
- Bush Hog RM150 angle blade, 3pt. 10' wide
- Planter markers off JD 1770NT
- 700 gallon liquid fertilizer system for JD 24R planter
- 1000 gallon fuel tank
- 1600 gallon sump tank with steel bands

Concessions available; including homemade pies & baked goods, biscuits & gravy.



Circle E Auction LLC

Your Farm Auction Specialists!

620-778-9966

1551 14000 Road • Altamont, KS 67330

Auctioneer ERVIN EICHER

Auctioneer MERLIN EICHER



TERMS: Cash or Good Check with Photo ID – All buyers unknown to Circle E Auction MUST furnish a current bank letter of credit if paying by check. We are not responsible in case of accident or sickness on premises. Everything sells AS IS-WHERE IS with no warranty actual or implied. Not responsible for stolen items or loss of items. Nothing removed until settled for. All announcements day of sale supersede any printed material.